



Shepherd's Crossing

JUNE 2017—IN THIS ISSUE:

Meet Joe

Unsolicited Blessings

Solicited Blessings

Bridge Digital Marketing

2016 by the Numbers

Share your blessings—Make a difference

Meet Joe—

How a small contribution can make a huge impact.

Joe was in need of a minor car repair but was unable to make the payment. Thanks to the Guardians, he was able to get the repair and live more comfortably. He is a 71 year old single man who usually manages to live on his \$730 social security and \$80 food stamps each month. He receives housing assistance, but pays for electric, gas, car insurance, burial insurance and food. He recently paid for his car renewal and tags, therefore, his funds ran short. His pickup also needed \$133.13 in repairs. Shepherd's Crossing referred him to the Guardians—a group formed to help men with immediate financial needs to live with hope and dignity. The Guardians paid the repair bill for him. Approximately 80 percent of all Guardian requests come from Shepherd's Crossing—a prime example of inter-agency cooperation.



Unsolicited Blessings

Three local benefactors blessed us with unsolicited donations, evidence of growing awareness of the Crossing's impact in our community.



Prairiewood Retreat and Preserve, owned and managed by Becky and Kail Katzenmeier, dedicated the proceeds from its first *Saturday Night at the Movies* on February 25 to Shepherd's Crossing. Even on a cold winter evening, the barn was warm and cozy. Suzy Baker, Julie Kiracofe and Becky made everyone feel at home. Popcorn, hot dogs and soda capped off a great evening. The event provided

\$560 to help our clients. Thanks, Kale and Becky! By the way, they are the parents of our youngest board member, Emily Katzenmeier.



HyVee Store surprised us with a special event March 31-April 2—Springtime Cookout. A special deal included a hot dog, chips and soda for \$3.00. All proceeds went to our operating fund—a check for \$500. A huge thank you to Marcus Fischer, general manager and Cindy Habluetzel, customer service rep! Marcus and his crew also provided refreshments for the 5th Annual C. Clyde Run last fall.



The Cox Brothers, Bud and Bobby, honored us by dedicating proceeds on January 26, as a part of the reopening of the remodeled Hibachi Hut. This generous gesture added \$1,000 to our funds to assist clients. Thanks, Bud and Bobby!

Solicited Blessing

Our friends, old and new, made us *numero uno* once again in the Greater Manhattan Community Foundation's 2017 Grow Green Match Day. 162 donors gave \$30,715 to our endowed fund. Both numbers ranked at the top of 52 agencies. Through the generosity of Phil Howe, we received \$10,000 in matching funds. Because of Grow Green, total funds with the Foundation more than quadrupled since December 31, 2012.

Join many others as a recurring online donor. It's easy to set it up at: www.shepherdscrossing.info then click the DONATE NOW link.

Bridge Digital Marketing

Bridge Digital Marketing, a social media specialist firm, recently began promoting Shepherd's Crossing on Facebook, Instagram and Twitter. Bridget Stanton, a resident of Leonardville and a home schooled high school senior, is creating greater awareness, especially among the young audience. During May, she focused on promoting the 6th Annual C. Clyde Run among college students. *Be sure to mark your calendar for October 28!*



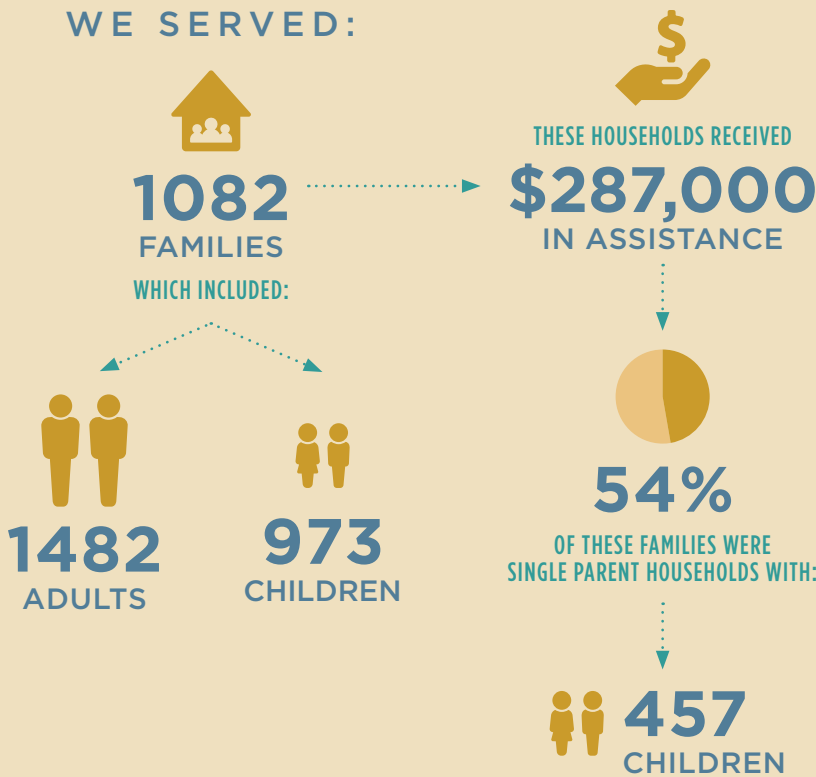
Shepherd's Crossing's mission is to provide compassionate and caring assistance to those in need of a listening ear and financial support.

OPEN: Tuesday 10 a.m.-2 p.m. & Thursday 2-5:30 p.m.

621 Humboldt Ave.
Box 1919, Manhattan, KS 66505
Phone: 785.776.1470
Fax: 785.537.2311
www.shepherdscrossing.info



WE SERVED:



This is one of the most deserving classifications of clients which we serve. Many of these households have incomes less than \$1,000 per month.

From the Executive Director

In his book, Chaos, James Gleick defines the Butterfly Effect this way: "Tiny differences in input [can] quickly become overwhelming differences in output." A butterfly's air movement can create a weather pattern in the future. It is true in science and it is true in life. Small changes and small choices can become magnified over time and have major consequences. Too often many of our clients forget to connect the dots between choices and consequences and that every choice has a domino effect that can alter their future. Such as during the cold winter months when the Cold Weather Rule allows them to not pay their utility bills. But then when it gets warm, three to five month's worth of utilities are due. It is difficult for Shepherd's Crossing to find \$1,000 to keep their power or gas on. That is why we have initiated partnerships with three different financial planning programs to help our clients with their monthly spending habits and to encourage them to put money aside each month for large expenses, like those high winter and summer utility bills or with other expenses like unplanned auto repairs or yearly car tags and taxes.

- Beverly Olson



From the President

Shepherd's Crossing held a retreat in January for all church members. It was well attended and allowed the board and staff to bring the churches up-to-date on operations and finances. An *ad hoc* committee presented a proposal to make changes in the way we approve assistance for our clients who have been coming to Shepherd's Crossing for several years and have been helped numerous times. We will now require those clients, subject to some exceptions, to attend financial counseling sessions with the goal of becoming more independent and not in need of assistance on a regular basis. We will continue to help those clients who cannot support themselves because of a physical or mental condition beyond their control. We are thankful and appreciative of the financial resources provided by our donors and granting agencies. We expect to provide assistance to more clients in 2017 than any previous year. We continue to work with other agencies in the area to network on a referral basis for those services we do not provide, but are needed by our clients. Thanks to all who help Shepherd's Crossing throughout the year.

- Terry Arthur, President

NEWS

Shepherd's Crossing
 P.O. Box 1919
 Manhattan, Kansas 66505

Nonprofit Org.
 US Postage
PAID
 Manhattan, KS
 Permit No. 4